



Producto distribuido por

SDM
Oil & Gas

 (+51) 999 012777  ventas@sdm.pe

www.sdm.pe | Av. Galvez Barrenechea 274. San Isidro

CRYOGENIC CENTRIFUGAL PUMPS

HGM SERIES

FOR LIQUEFIED NATURAL GAS (LNG)

TECHNICAL FEATURES

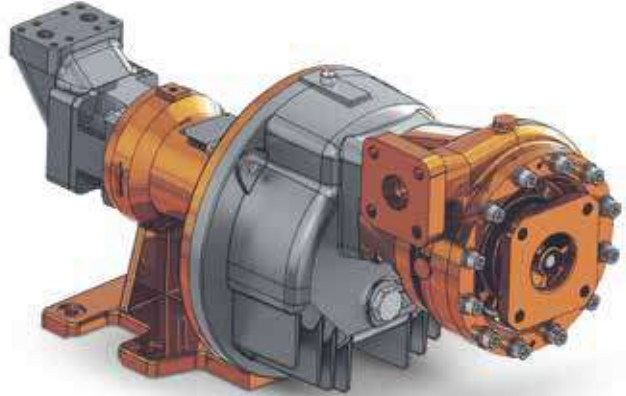
- Hydraulic motor and gearbox transmission
- Mechanical seal in rulon
- Inducer to minimize required NPSH
- Low noise emission (< 80 dB)

APPLICATIONS

- Road trailers unloading, storage/iso-containers loading/unloading
- Process and back-up operations, petrochemical industry applications
- Special applications with differential head and flow rates upon customer demand

TRANSFERRED FLUIDS

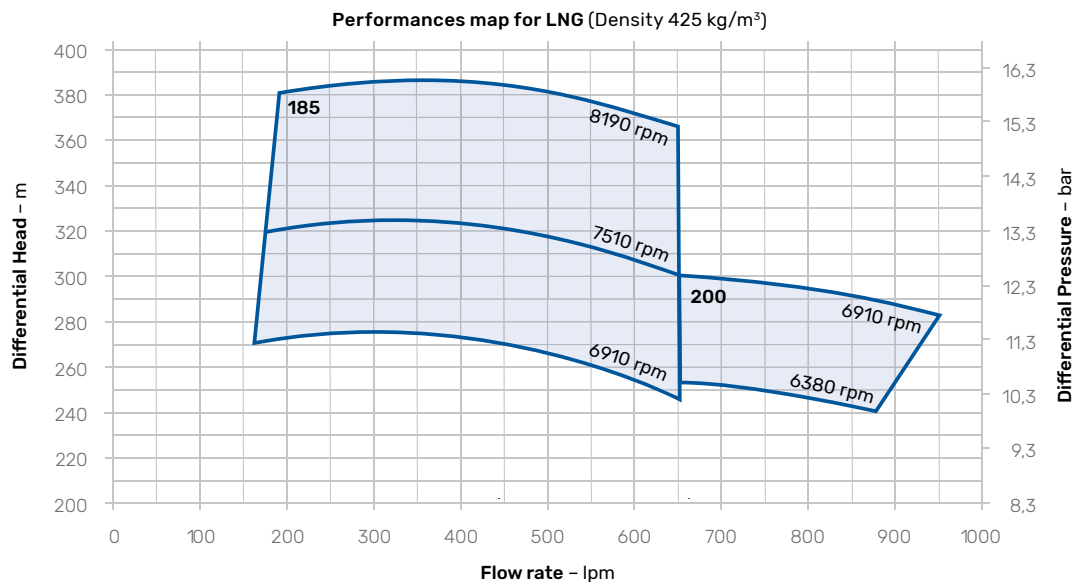
- LNG

**HGM SERIES PERFORMANCES**

Model		HGM 185	HGM 200
Hydraulic Motor		F12 - 30	F12 - 30
Max operating speed	rpm	8190	6910
Max suction pressure	P [bar]	6	6
Max allowable working pressure	MAWP [bar]	23/33*	23
Max head	DH [m]	385	300
Max flow rate	Q [lpm]	650	950

*Aluminium pump casing (23 bar) and bronze pump casing (33 bar)

Data can be subjected to change



OPTIONAL ACCESSORIES

- Counter flanges
- Filter
- Flexible hoses for suction and discharge lines
- Leakage detection by temperature sensor
- Flushing system with nitrogen gas
- Temperature sensor for cooling down
- Temperature sensor of bearing casing

TEST AND CHECKS

- Dimensional control of each mechanical component before assembly
- Running test of each pump with LIN before delivery

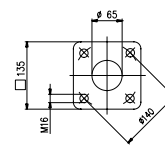
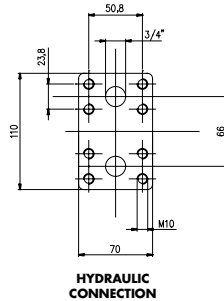
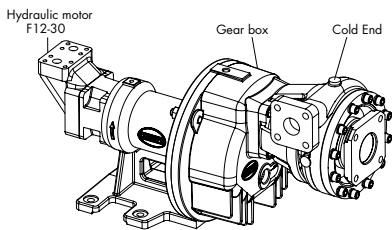
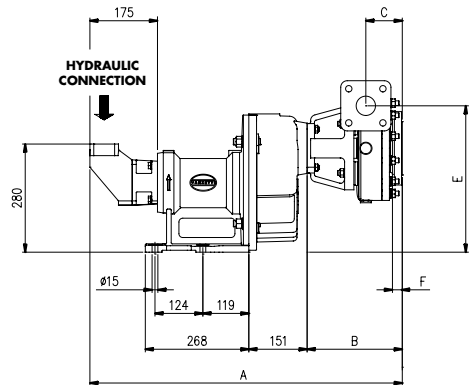
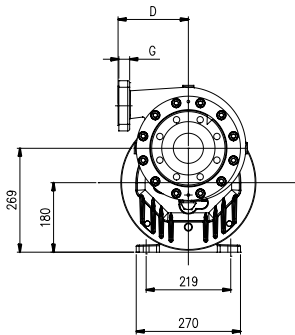
STANDARDS

Designed according to:

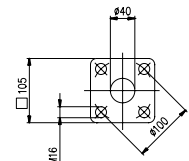
- European Directive Machinery
- European Directive ATEX
- EIGA/IGC/CGA guidelines



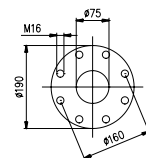
GENERAL DIMENSIONS



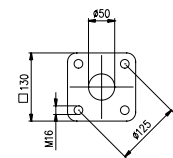
SUCTION FLANGE HGM 185



DISCHARGE FLANGE HGM 185



SUCTION FLANGE HGM 200



DISCHARGE FLANGE HGM 200

HGM 185

A	B	C	D	E	F	G	Weight [kg]
798	235	98	150	364	18	25	130

HGM 200

A	B	C	D	E	F	G	Weight [kg]
809	246	95	182	379	20	25	135

Data can be subjected to change



Certified quality management system